

OPEN ACCESS



All articles published in the Journal of Threatened Taxa are registered under Creative Commons Attribution 4.0 International License unless otherwise mentioned. JoTT allows unrestricted use of articles in any medium, reproduction and distribution by providing adequate credit to the authors and the source of publication.



Journal of Threatened Taxa

The international journal of conservation and taxonomy

www.threatenedtaxa.org

ISSN 0974-7907 (Online) | ISSN 0974-7893 (Print)

SHORT COMMUNICATION

ESTIMATING THE DENSITY OF RED JUNGLEFOWL *GALLUS GALLUS* (GALLIFORMES: PHASIANIDAE) IN THE TROPICAL FOREST OF SIMILIPAL TIGER RESERVE, EASTERN INDIA

Himanshu S. Palei, Hemanta K. Sahu & Anup K. Nayak

26 February 2016 | Vol. 8 | No. 2 | Pp. 8495–8498
10.11609/jott.2571.8.2.8495-8498



For Focus, Scope, Aims, Policies and Guidelines visit http://threatenedtaxa.org/About_JoTT.asp

For Article Submission Guidelines visit http://threatenedtaxa.org/Submission_Guidelines.asp

For Policies against Scientific Misconduct visit http://threatenedtaxa.org/JoTT_Policy_against_Scientific_Misconduct.asp

For reprints contact <info@threatenedtaxa.org>

Partner



Publisher/Host





ISSN 0974-7907 (Online)
ISSN 0974-7893 (Print)

ESTIMATING THE DENSITY OF RED JUNGLEFOWL *GALLUS GALLUS* (GALLIFORMES: PHASIANIDAE) IN THE TROPICAL FOREST OF SIMILIPAL TIGER RESERVE, EASTERN INDIA

Himanshu S. Palei¹, Hemanta K. Sahu² & Anup K. Nayak³

^{1,2} Department of Zoology, North Orissa University, Takatpur, Baripada, Mayurbhanj, Odisha 757003, India

³ Office of the RCCF cum Field Director, Similipal Tiger Reserve, Bhanjapur, Baripada, Odisha 757003, India

¹ himanshu.palei@gmail.com (corresponding author), ² hks.nou@gmail.com, ³ anupnaya@gmail.com

OPEN ACCESS



Abstract: To determine population status of wild animal using reliable sampling techniques forms an important component of conservation effort and effective wildlife management. We estimated the density of Red Junglefowl *Gallus gallus* using distance sampling, a quantitatively robust technique, in Similipal Tiger Reserve, Odisha, eastern India during September 2012 to May 2013. We laid 27 transects and walked seven to eight times for a total of 390km to obtain the distance sampling data. We used DISTANCE software for analysis. We estimated per km² Red Junglefowl group density as 4.99 and density as 7.64 birds in the intensive study area. Mean group size of Red Junglefowl was 1.48. Our results may prove helpful in planning better management needs and strategies for the survival and conservation of Red Junglefowl in different protected areas.

Keywords: Density, Distance sampling, *Gallus gallus*, line transect, Similipal Tiger Reserve.

Monitoring the population status of wild animals forms an important component of conservation effort and effective wildlife management. It provides information on the status of wildlife populations and can help evaluate effective conservation actions, thereby allowing for adaptive management (Williams et al. 2002). Additionally, it can give an insight into the biology of species, especially the fundamental process of survival and reproduction and vulnerability to immediate or long-term threats (Rockwood 2006). Large or medium-sized ground dwelling birds like the Red Junglefowl *Gallus*

gallus play an important functional role in ecosystems, including dispersing seeds and controlling insect pests (Arshad et al. 2000), and serving as prey for large or small carnivores (Borah et al. 2009; Hayward et al. 2012). Furthermore the Red Junglefowl (hereafter RJF) species is very sensitive to forest fires as its ground nesting period coincides with forest fires in the tropical forests of India (Javed & Rahmani 2000). Therefore, monitoring the population of RJF is crucial for conservation and for forest management through conserving its habitat.

The RJF is distributed along the foothills of Himalaya from Myanmar to northwestern India extending southward into the hills of peninsular India (Ali & Ripley 1983). It also occurs in tropical and subtropical habitats in Myanmar, southern China and Indonesia to Java (Sullivan 1991; Ferrnandes et al. 2009). The RJF is listed as Least Concern in status because of its large range and population size (Birdlife International 2012). In many of the ranges the species is thought to be facing threats from habitat destruction and genetic contamination due to interbreeding with domestic chicken (Peterson & Brisbin 1998). Out of the five sub-species of RJF, two

DOI: <http://dx.doi.org/10.11609/jott.2571.8.2.8495-8498>

Editor: L.A.K. Singh, Bhubaneswar, Odisha, India

Date of publication: 26 February 2016 (online & print)

Manuscript details: Ms # 2571 | Received 14 December 2015 | Final received 03 February 2016 | Finally accepted 05 February 2016

Citation: Palei, H.S., H.K. Sahu & A.K. Nayak (2016). Estimating the density of Red Junglefowl *Gallus gallus* (Galliformes: Phasianidae) in the tropical forest of Similipal Tiger Reserve, eastern India. *Journal of Threatened Taxa* 8(2): 8495–8598; <http://dx.doi.org/10.11609/jott.2571.8.2.8495-8498>

Copyright: © Palei et al. 2016. Creative Commons Attribution 4.0 International License. JoTT allows unrestricted use of this article in any medium, reproduction and distribution by providing adequate credit to the authors and the source of publication.

Funding: Similipal Tiger Reserve, Odisha Forest Department under Estimation of Prey Density of Tiger Project.

Conflict of Interest: The authors declare no competing interests.

Acknowledgments: We thank the Principal Chief Conservator of Forests and Chief Wildlife Warden, Odisha and Similipal Tiger Reserve for permission to work in Similipal Tiger Reserve and Manish Bakshi for preparing the study area map.



sub-species are found in India, *Gallus gallus murghi* and *Gallus gallus spadiceus* (Ali & Ripley 1983). *Gallus gallus murghi* is spread across in the northern and central parts of India, extending eastwards to Odisha and West Bengal and the *Gallus gallus spadiceus* is distributed in the northeastern parts (Collias & Collias 1967; Ferrnandes et al. 2009).

Despite its wide distribution in India, very few studies have been conducted on the RJF and these mainly relate to abundance and conservation status (Ferrnandes et al. 2009; Subhani et al. 2010; Harihar & Fernandes 2011), and habitat use (Javed & Rahmani 2000). Similipal is both a tiger reserve and a biosphere reserve that was established to conserve an integral assemblage of biodiversity with diverse habitat. Similipal forms a crucial link between the foothills of the Himalaya and the Eastern Ghats, as indicated by the presence of flora and fauna belonging to both these areas (Saxena & Brahmam 1989; Nair 2007, 2009, 2011, Sahoo et al. 2012; Mohapatra et al. 2014). This study comprehensively documents the population density, abundance and group size of RJF in the tropical forest of Similipal Tiger Reserve, eastern India.

Study area

The study was carried out in Similipal Tiger Reserve, eastern India. The area is the 3rd largest tiger reserve in India, covering over 2,750km², and is characterized by an undulating hilly terrain. The altitude ranges between 300m and 1,200m. It lies between 20°17'–22°34'N & 85°40'–87°10'E. Some consider Similipal as part of the Eastern Ghats (Sinha 1971), while others treat it as the south-eastern extension of the Chhota Nagpur Plateau (Ray 2005). The area falls under the province of Chhotanagpur in the Deccan Peninsula bio-geographic zone (Rodgers & Panwar 1988). The survey was conducted within the “intensive study area” (ISA) of 421km², representing all major terrain and vegetation structure found in the tiger reserve (Fig. 1). The climate is seasonal, with a rainy season between July and October and an average annual precipitation of 1850mm (Srivastava & Singh 1997). The winter and summer seasons occur between November and February and March to June, respectively. Temperatures range from 3°C in December and January to 38°C in June. Champion & Seth (1968) classified the reserve as a tropical moist deciduous forest, dominated by *Shorea robusta*, *Syzygium cumuni*, *Mangifera indica*, *Terminalia tomentosa* and *Anogeissus latifolia*. Similipal is home to 1076 species of plants, 55 species of mammals, 304 species of birds, 60 species of reptiles, 21 species of

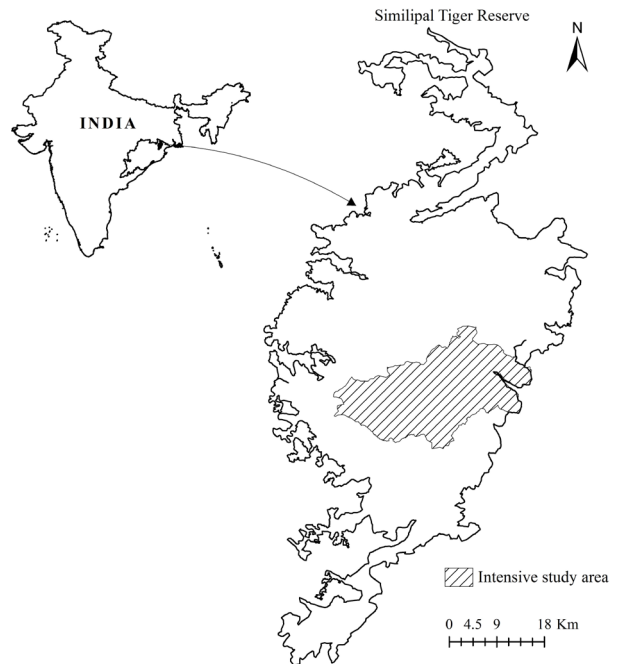


Figure 1. Intensive study area and location map of Similipal Tiger Reserve

amphibians and 38 species of fishes (Dutta et al. 2009).

METHODS

Field sampling was carried out from the months of September 2012 to May 2013. The distance sampling by the line transect method was used to estimate densities of RJFs in the intensive study area (Buckland et al. 2001). A total of 27 line transects (each 2km long) were placed in the study area, totaling 54km. We made six to seven repeated walks on the transects, totaling a distance covered of 390km. The surveys were carried out between 06:00–10:00 hr and 16:00–18:30 hr. When the species were encountered we recorded the following information: the number of individuals; sex; sighting distance: distance to the species from the point of observation by using a range finder; and sighting angle: the angle between the transect line and the species from the point of observation was calculated using a hand-held compass.

We analyzed the data using the DISTANCE version-6 (Thomas et al. 2010) software and computed the estimate of density. We pooled the data from temporal replicates of each transect and treated the mean as a single sample (sample size = 27). We truncated the farthest sightings on transects to achieve a reliable density estimate. We estimated variance in encounter rates of animals between transects empirically (Buckland et al. 1993). We judged the fit of possible alternative models to each

specific dataset using Akaike’s information criterion (AIC) value and goodness of fit tests generated by the program DISTANCE, and selected the best possible model. We generated encounter rate, average probability of detection and density using the selected model in the program DISTANCE.

RESULTS

We recorded a total of 126 individuals of RJF on 85 occasions. The estimated cluster was 4.99 per km² with a mean group size of 1.48±0.13 (SE) and the encounter rate was 0.21 per km. The density of individuals was estimated to be 7.64 RJF per km² (95% confidence interval of 5.74–11.31 RJF per km²) and the percent of coefficient of variation was 18.03 (Table 1; Image 1). The minimum population density of 5.74 RJF per km² account for 2417 RJF (lower CI) in the intensive study area of Similipal Tiger Reserve. The sightings ranged between 1 and 4 RJF with a mean of 1.48±0.79 (SD) RJF. Most of the sightings were single RJF (44.1%), although groups of two (28.3%), three (21.3%) or four (6.3%) were also sighted (Fig. 2).

We attempted to estimate seasonal density of RJF in the study area. Seasonal sightings were too low to estimate reliable density. Thomas et al. (2010) recommended that 45–60 sightings were essential to estimate reliable density.

DISCUSSION

Although distance sampling methodology has been used to estimate the density of Grey Junglefowl in many protected areas in India (Ramesh et al. 2011; Selvan & Sridharan 2012; Narasimmarajan et al. 2012), similar density estimates of RJFs are available only from Rajaji National Park (Harihar & Fernandes 2011). Our estimated density is lower than the density estimated from the Rajaji National Park (13.54 RJFs/km²). The variation of density in different studies could be influenced by many factors such as season, annual variations and observer differences. However, in the absence of comparable density estimates from across representative habitats within India, it is difficult to identify the regulators of

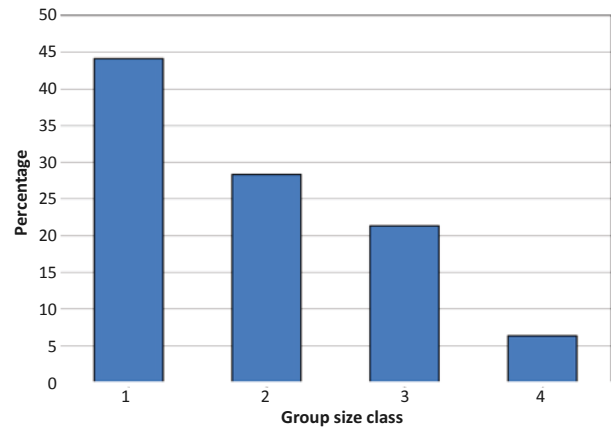


Figure 2. Group size classes of Red Junglefowl *Gallus gallus* in the Similipal Tiger Reserve (Total number of Red Junglefowl 126 in 85 sightings).

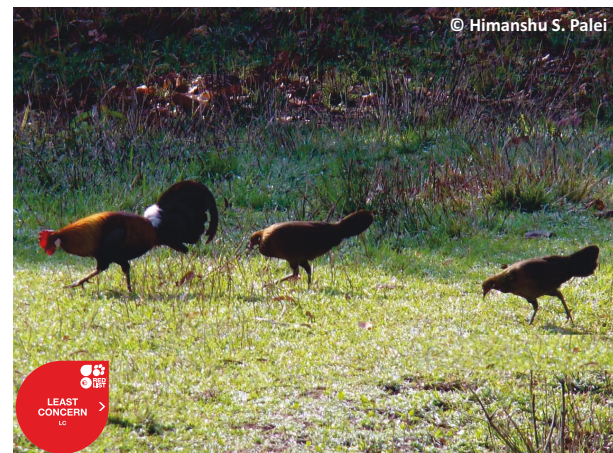


Image 1. Red Junglefowls *Gallus gallus* in Similipal Tiger Reserve

density of RJFs. The distance sampling technique based on line transect sightings of RJF provided a statistically robust estimate in estimating the population. By adopting this technique, comparable density estimates of the RJF can be generated from protected areas across the country which can serve as critical baseline data for future monitoring.

Table 1. Density estimate of Red Junglefowl *Gallus gallus* in the Similipal Tiger Reserve

Sightings	Group density (Dg/ km ²)		CV (%)	95% Confidence interval		Group size		Individual density (D/ km ²)		CV (%)	95% Confidence interval	
	Dg	SE		Lower	Upper	GS	SE	D	SE		Lower	Upper
N												
85	4.99	0.84	16.53	3.77	7.13	1.48	0.13	7.64	1.43	18.03	5.74	11.31

N - Total number of sightings; Dg - Group density; D - Density; SE - Standard error; CV - Coefficient of variance; GS - Group size.

Although our results for RJF population density in the Similipal are important, we still need a better understanding of ecological dynamics in RJF abundance. To fill this gap and to provide specific forest management recommendations to local institutions, we suggest that future research should focus on: (i) long term population monitoring of RJF to know population/demographic parameters such as population trend and survivorship, (ii) investigating the ecological drivers that may explain population abundance among different habitats more broadly, (iii) the impact of forest fire and other anthropogenic disturbances on the RJF population. Along with population density, these issues are important for filling in the gap in information on status and ecology of this wide-ranging but less-studied species, which is important for both management and scientific reasons.

REFERENCES

- Ali, S. & S.D. Ripley (1983). *Compact Handbook of the Birds of India and Pakistan*. Oxford University Press, New Delhi, 737pp.
- Arshad, M.I., M. Zakaria, A.S. Sajap & A. Ismail (2000). Food and feeding habits of Red Junglefowl. *Pakistan Journal of Biological Science* 3(6): 1024–1026; <http://dx.doi.org/10.3923/pjbs.2000.1024.1026>
- BirdLife International (2012). *Gallus gallus*. The IUCN Red List of Threatened Species. Version 2014.2. <www.iucnredlist.org>. Downloaded on 11 November 2014; <http://dx.doi.org/10.2305/IUCN.UK.2012-1.RLTS.T22679199A40112723.en>
- Borah, J., K. Deka, S. Dookia & R.P. Gupta (2009). Food habits of Dhols (*Cuon alpinus*) in Satpura Tiger Reserve, Madhya Pradesh, India. *Mammalia* 73: 85–88; <http://dx.doi.org/10.1515/MAMM.2009.024>
- Buckland, S.T., D.R. Anderson, K.P. Burnham, J.L. Laake, D.L. Borchers & L. Thomas (2001). *Introduction to Distance Sampling*. Oxford University Press, London, 361pp.
- Champion, H.G. & S.K. Seth (1968). *A Revised Survey of the Forest Types of India*. Manager of publications, Govt. of India Press, New Delhi.
- Collias, N.E. & E.C. Collias (1967). A field study of the Red Jungle Fowl in north-central India. *The Condor* 69: 360–389.
- Dutta, S.K., M.V. Nair, P.P. Mohapatra & A.K. Mahapatra (2009). *Amphibians and Reptiles of Similipal Biosphere Reserve*. Regional Plant Resource Centre, Bhubaneswar, Odisha, India, v+177pp.
- Fernandes, M., Mukesh, S. Sathyakumar, R. Kaul, R.S. Kalsi & D. Sharma (2009). Conservation of Red Junglefowl *Gallus gallus* in India. *International Journal of Galliformes Conservation* 1: 94–101.
- Harihar, A. & M. Fernandes (2011). Estimating the seasonal densities of Indian Peafowl *Pavo cristatus* and Red Junglefowl *Gallus gallus* in the northern Indian deciduous forests of Chilla Range, Rajaji National Park. *International Journal of Galliformes Conservation* 2: 31–35.
- Hayward, M.W., W. Jedrzejewski & B. Jędrzejewska (2012). Prey preferences of the tiger *Panthera tigris*. *Journal of Zoology* 286: 221–231; <http://dx.doi.org/10.1111/j.1469-7998.2011.00871.x>
- Mohapatra, P.P., H.S. Palei & S.A. Hussain (2014). Occurrence of Asian Small-clawed Otter *Aonyx cinereus* (Illiger, 1815) in eastern India. *Current Science* 107(3): 367–370.
- Nair, M.V. (2007). On the occurrence of Jerdon's Baza *Aviceda jerdoni* in Similipal Tiger Reserve, with some observations on behaviour and vocalization. *Indian Birds* 3(2): 61–62.
- Nair, M.V. (2010). Thick-billed Green-Pigeon *Treron curvirostra* in Similipal Hills, Orissa: an addition to the avifauna of peninsular India. *Indian Birds* 6(1): 19–20.
- Nair, M.V. (2011). Three new butterfly records for peninsular India: Dusky Yellow-breasted Flat *Gerosis phisara* (Moore) (Hesperiidae), Common Gem *Poritia hewitsoni* Moore (Lycaenidae) and Great Nawab *Polyura eudamippus* (Doubleday) (Nymphalidae) from Similipal Hills, Odisha, India. *Journal of Threatened Taxa* 3(3): 1624–1628; <http://dx.doi.org/10.11609/JoTT.o2635.1624-8>
- Narasimmarajan, K., B. Barman & L. Puia (2012). Population density and group size of the Grey Junglefowl *Gallus sonneratii* in the Melghat Tiger Reserve, Maharashtra, central India. *Journal of Threatened Taxa* 4(7): 2723–2726; <http://dx.doi.org/10.11609/JoTT.o2821.2723-6>
- Palei, H.S., T. Pradhan, H.K. Sahu & A.K. Nayak (2015). Estimating mammalian abundance using camera traps in the tropical forest of Similipal Tiger Reserve, Odisha, India. *Proceedings of the Zoological Society*, 1–8pp; <http://dx.doi.org/10.1007/s12595-015-0143-x>
- Peterson, A.T. & I.L. Brisbin (1998). Genetic endangerment of wild Red Junglefowl *Gallus gallus*. *Bird Conservation International* 8: 387–394.
- Prusty, B.C. & L.A.K. Singh (1996). Trend of population of Tiger and Leopard in Similipal Tiger Reserve: a conservation concern. *Indian Forester* 122(10): 865–868.
- Ramesh, N., M.C. Sathyanarayana & H. Lloyd (2011). Abundance of grey junglefowl *Gallus sonneratii* at Theni Forest Division, Western Ghats, India: implications for monitoring and conservation. *International Journal of Galliformes Conservation* 2: 14–21.
- Ray, G.C. (2005). *Geography of Orissa*. Kitab Mahal, Cuttack, 324pp.
- Rockwood, L.L. (2006). *Introduction to Population Ecology*. Blackwell Publishing, USA.
- Rodgers, W.A. & H.S. Panwar (1988). *Planning a Wildlife Protected Area Network in India - 2 Vols*. Wildlife Institute of India, Dehradun.
- Sahoo, D., H.K. Sahu, S.K. Dutta & H.S. Upadhyay (2012). Sighting of Red-necked Keelback (*Rhabdophis subminiatus*) in Similipal Tiger Reserve, Orissa, India. *Tiger Paper* 39(1): 31–32.
- Saxena, H.O. & M. Brahmam (1989). *The Flora of Similipal Hills, Orissa*. Regional Research Laboratory, Bhubaneswar, 231pp.
- Selvan, K.M. & N. Sridharan (2012). Grey Junglefowl *Gallus Sonneratii* (Galliformes: Phasianidae) in Kalakad-Mundanthurai Tiger Reserve, Tamil Nadu, India. *Journal of Threatened Taxa* 4(1): 2328–2329; <http://dx.doi.org/10.11609/JoTT.o2538.2328-9>
- Sinha, B.N. (1971). *Geography of Orissa*. India-Land and the People Series. National Book Trust, India, New Delhi, 351pp.
- Srivastava, S.S. & L.A.K. Singh (1997). Monitoring of precipitation and temperature in Similipal Tiger Reserve. In: Tripathy, P.C. & S.N. Patro (eds.). *Similipal: A Natural Habitat of Unique Biodiversity*. Orissa Environmental Society, Bhubaneswar.
- Srivastava, S.S. & L.A.K. Singh (2001). *Elephants in Similipal: History, Status, Issues, Techniques and Biological Notes on Elephants. Volume - I*. Similipal Tiger Reserve, Baripada, Mayurbhanj, Orissa, 200pp.
- Subhani, A., M.S. Awan, M. Anwar, U. Ali & N.I. Dar (2010). Population Status and Distribution Pattern of Red Jungle Fowl (*Gallus gallus murghi*) in Deva Vatala National Park, Azad Jammu & Kashmir, Pakistan: A Pioneer Study. *Pakistan Journal of Zoology* 42(6): 701–706.
- Sullivan, M.S. (1991). Individual and social behaviour of Red Junglefowl. *Journal of World Pheasant Association* 15 & 16: 57–72.
- Thomas, L., S.T. Buckland, E.A. Rexstad, J.L. Laake & S. Strindberg (2010). Distance software: design and analysis of distance sampling surveys for estimating population size. *Journal of Applied Ecology* 47: 5–14; <http://dx.doi.org/10.1111/j.1365-2664.2009.01737.x>
- Williams, B.K., J.D. Nichols & M.J. Conroy (2002). *Analysis and Management of Animal Populations*. 1st edition. Academic Press, San Diego, California, USA.





OPEN ACCESS



All articles published in the Journal of Threatened Taxa are registered under Creative Commons Attribution 4.0 International License unless otherwise mentioned. JoTT allows unrestricted use of articles in any medium, reproduction and distribution by providing adequate credit to the authors and the source of publication.

ISSN 0974-7907 (Online); ISSN 0974-7893 (Print)

February 2016 | Vol. 8 | No. 2 | Pages: 8421–8540

Date of Publication: 26 February 2016 (Online & Print)

DOI: 10.11609/jott.2016.8.2.8421–8540

www.threatenedtaxa.org

Article

Rediscovery, systematics and proposed Red List status of *Ledebouria junnarensis* S.S. Rahangdale and S.R. Rahangdale nom. nov. (Asparagaceae) - an endemic species from the Western Ghats, Maharashtra, India

-- Savita Sanjaykumar Rahangdale & Sanjaykumar Ramlal Rahangdale, Pp. 8421–8433

Communications

Population studies of Lowe's Monkey (Mammalia: Primates: Cercopithecidae: *Cercopithecus lowei* Thomas, 1923) in Kakum Conservation Area, Ghana

-- Edward D. Wiawe, Pp. 8434–8442

Numerical taxonomy of *Berlinia* species (Caesalpinioideae: Leguminosae) and their distribution in Nigeria

-- Emmanuel C. Chukwuma, Abiodun E. Ayodele, Michael O. Soladoye & Deborah M. Chukwuma, Pp. 8443–8451

Data Paper

Flora of Fergusson College campus, Pune, India: monitoring changes over half a century

-- Ashish N. Nerlekar, Sairandhri A. Lapalikar, Akshay A. Onkar, S.L. Laware & M.C. Mahajan, Pp. 8452–8487

Short Communications

Tangled skeins: a first report of non-captive mating behavior in the Southeast Asian Paradise Flying Snake (Reptilia: Squamata: Colubridae: *Chrysopelea paradisi*)

-- Hinrich Kaiser, Johnny Lim, Heike Worth & Mark O'Shea, Pp. 8488–8494

Estimating the density of Red Junglefowl *Gallus gallus* (Galliformes: Phasianidae) in the tropical forest of Similipal Tiger Reserve, eastern India

-- Himanshu S. Palei, Hemanta K. Sahu & Anup K. Nayak, Pp. 8495–8498

The effect of daytime rain on the Indian Flying Fox (Mammalia: Chiroptera: Pteropodidae *Pteropus giganteus*)

-- S. Baskaran, A. Rathinakumar, J. Maruthupandian, P. Kaliraj & G. Marimuthu, Pp. 8499–8502

An observation on the Odonata fauna of the Asansol-Durgapur Industrial Area, Burdwan, West Bengal, India

-- Amar Kumar Nayak & Utpal Singha Roy, Pp. 8503–8517

Three interesting wood rotting macro-fungi from Jharkhand, India

-- Manoj Emanuel Hembrom, Arvind Parihar & Kanad Das, Pp. 8518–8525

Notes

Description of a new species of *Oligosita* Walker (Hymenoptera: Trichogrammatidae) from Punjab, India

-- Mohsin Ikram & Mohd. Yousuf, Pp. 8526–8527

Range extension of *Lestes nodalis* Selys, 1891 (Odonata: Zygoptera: Lestidae) in southern India

-- K.G. Emiliyamma & Muhamed Jafer Palot, Pp. 8528–8530

Report on the genus *Herdonia* Walker (Lepidoptera: Thyrididae) in Karnataka Western Ghats, India

-- P.R. Shashank, Pp. 8531–8532

Long-horned grasshoppers (Orthoptera: Tettigoniidae) in Radhanagari Wildlife Sanctuary, Maharashtra, India

-- Sunil M. Gaikwad, Yogesh J. Koli, Gopal. A. Raut, Sadashiv H. Waghmare & Ganesh P. Bhawane, 5pp Pp. 8533–8537

Intrusion of devil weed *Chromolaena odorata*, an exotic invasive, into Kinnerasani and Eturnagaram wildlife sanctuaries, Telangana, India

-- Sateesh Suthari, Ramesh Kandagatla, Sarede Geetha, Ajmeera Ragan & Vatsavaya S. Raju, Pp. 8538–8540