

OPEN ACCESS

The Journal of Threatened Taxa is dedicated to building evidence for conservation globally by publishing peer-reviewed articles online every month at a reasonably rapid rate at www.threatenedtaxa.org. All articles published in JoTT are registered under [Creative Commons Attribution 4.0 International License](https://creativecommons.org/licenses/by/4.0/) unless otherwise mentioned. JoTT allows unrestricted use of articles in any medium, reproduction, and distribution by providing adequate credit to the authors and the source of publication.



Journal of Threatened Taxa

Building evidence for conservation globally

www.threatenedtaxa.org

ISSN 0974-7907 (Online) | ISSN 0974-7893 (Print)

NOTE

CLARKE'S MORNING GLORY *IPOMOEA CLARKEI* HOOK.F. (CONVOLVULACEAE): ADDITION TO THE FLORA OF EASTERN GHATS

L. Rasingam, J. Swamy & M. Sankara Rao

26 May 2018 | Vol. 10 | No. 6 | Pages: 11827–11829

10.11609/jott.3553.10.6.11827-11829



For Focus, Scope, Aims, Policies and Guidelines visit <http://threatenedtaxa.org/index.php/JoTT/about/editorialPolicies#custom-0>

For Article Submission Guidelines visit <http://threatenedtaxa.org/index.php/JoTT/about/submissions#onlineSubmissions>

For Policies against Scientific Misconduct visit <http://threatenedtaxa.org/index.php/JoTT/about/editorialPolicies#custom-2>

For reprints contact info@threatenedtaxa.org

Partners



صندوق محمد بن زايد
للمحافظة على
الكائنات الحية
The Mohamed bin Zayed
SPECIES CONSERVATION FUND



zoo!
ZÜRICH

Member



Publisher & Host



CLARKE'S MORNING GLORY *IPOMOEA CLARKEI* HOOK.F. (CONVOLVULACEAE): ADDITION TO THE FLORA OF EASTERN GHATS

L. Rasingam¹, J. Swamy² & M. Sankara Rao³

^{1,2,3} Botanical Survey of India, Deccan Regional Centre, Sai Hills Colony, Attapur, Hyderabad, Telangana 500030, India

¹rasingam@gmail.com (corresponding author),

²swamy.2706@gmail.com, ³mudadlas@gmail.com

Ipomoea L. one of the largest genus of the family Convolvulaceae, is represented by c. 650 species and mainly distributed in tropical and warm temperate regions of the world (Mabberley 2008). In India, the genus is represented by c. 65 species (Santapau & Henry 1973; Biju et al. 1998; Biju 2002; Shimpale et al. 2012; Shimpale et al. 2014; Sarvalingam et al. 2014), of which three species and one variety, viz. *Ipomoea clarkei* Hook. f. (Maharashtra), *Ipomoea laxiflora* H.J. Chowdhery & Debta (western Himalaya, Uttarakhand), *Ipomoea salsettensis* Santapau & Patel (Maharashtra), and *Ipomoea deccana* Austin var. *lobata* (C.B. Clarke) Johari (Karnataka, Kerala and Maharashtra) are endemic to India (Singh et al. 2015).

While exploring the floristic wealth of Nagarjunasagar-Srisaillam Tiger Reserve, the authors have collected specimens of *Ipomoea* in flowering and fruiting, which was later identified as *Ipomoea clarkei* Hook. f. Scrutiny of literature and consultations of major herbaria revealed that this species has been so far reported from Western Ghats of Maharashtra (Clarke 1885; Cooke 1908; Singh et al. 2015). Hence, it is reported here as a

new addition to the flora of Eastern Ghats. A detailed description, notes, distributional map and colour photographs are provided to facilitate identification.

Taxonomic treatment

Ipomoea clarkei

Hook.f., Fl. Brit. India 4: 734 1885; Cooke, Fl. Bombay 2: 245.1908; P. Lakshminaras. & Sharma, Fl. Nasik Dist. 327. 1991; Almeida, Fl. Maharashtra 3B: 323. 2001; Venkanna & Das, Fl. Maharashtra (Dicot.) 2: 460. 2001. Image 1 & 2

Specimen examined: 10138 (BSID), 7.xii.2012, 16.067631°N 78.837858°E, Neelganga, Srisaillam, Nagarjunasagar-Srisaillam Tiger Reserve, Andhra Pradesh, coll. L. Rasingam & M. Sankara Rao; 8005 (BSID), 23.x.2016, Saleswaram, 16.16663°N & 78.63637°E, Nagarjunasagar-Srisaillam Tiger Reserve, Telangana, 710m, coll. L. Rasingam & J. Swamy.

Annual slender twining herb. Stem slender, hairy, c. 1.2mm in diam. Leaves 2.5–6 x 1.2–4 cm, ovate, deeply cordate with rounded 0.8–1 cm lobes at base, entire along margins, long acuminate at apex; acumen c. 1cm long, bulbous based hairy on both surfaces, 5-nerved at base; petioles up to 3cm long, slender, sparsely hairy. Inflorescence axillary solitary, 1-flowered cyme. Peduncle slender 7–12 mm long, sparsely hairy; bract c. 2mm long, subulate; bracteole 1-2, c. 1mm long. Pedicel 8-15 mm long, slender, hairy, slightly thickened towards the apex in fruiting stage. Flowers yellow, 3–4 cm long. Calyx 7–8 mm long, 5 lobed; lobes slightly connate at



ISSN 0974-7907 (Online)
ISSN 0974-7893 (Print)

OPEN ACCESS



DOI: <http://doi.org/10.11609/jott.3553.10.6.11827-11829>

Editor: B. Ravi Prasad Rao, Sri Krishnadevaraya University, Anantapuram, India

Date of publication: 26 May 2018 (online & print)

Manuscript details: Ms # 3553 | Received 07 June 2017 | Final received 09 May 2018 | Finally accepted 15 May 2018

Citation: Rasingam., J. Swamy & M.S. Rao (2018). Clarke's Morning Glory *Ipomoea clarkei* Hook.f. (Convolvulaceae): addition to the flora of Eastern Ghats. *Journal of Threatened Taxa* 10(6): 11827–11829; <http://doi.org/10.11609/jott.3553.10.6.11827-11829>

Copyright: © Rasingam et al. 2018. Creative Commons Attribution 4.0 International License. JoTT allows unrestricted use of this article in any medium, reproduction and distribution by providing adequate credit to the authors and the source of publication.

Funding: Botanical Survey of India, Kolkata (Project title: Flora of Nagarjunasagar – Srisaillam Wildlife Sanctuary (Tiger Reserve).

Competing interests: The authors declare no competing interests.

Acknowledgements: The authors are grateful to Dr. Paramjit Singh, Director, Botanical Survey of India, Kolkata for facilities and Dr. P. Lakshminarasimhan, Scientist E and Dr. J. Jeyanthi, Scientist D for sending the herbarium images.





Image 1. *Ipomoea clarkei* Hook. f.: A - Habit; B - Flower; C - Capsule

base, unequal, ovate-lanceolate, entire along margin, acute-acuminate at apex, bulbous based hairy on upper surface, glabrous on inner surface. Corolla 3–4 cm long, infundibuliform, tube 2.5–3.2 cm long, limb c. 1.5 cm in diam., glabrous. Stamens 5, unequal, 1.2–1.5 cm long, epipetalous; filaments 0.9–1.2 cm long, slightly dilated and hairy at base, glabrous and narrow towards apex; anthers ovate c. 3 x 0.5 mm long. Gynoecium up to 2.2 cm long, inserted; ovary ovate, c. 1.8 x 1.1 mm long; style c. 2 cm long; stigma globose, 0.5 mm in diam. Capsule globose or sub orbicular, c. 1 x 0.9 cm, beaked, glabrous, 4-seeded; seeds c. 5 x 4 mm long, oblong, puberulous, dark brown.

Flowering and Fruiting: September–December.

Distribution: Endemic to western peninsular India (Maharashtra: Nasik, Pune and Thane districts); now from Eastern Ghats.

Habitat: Rare in mixed dry deciduous forests and open rocky grasslands in association with *Asparagus racemosus* Willd., *Heteropogon contortus* (L.) P.Beauv. ex Roem. & Schult. and *Pentanema indicum* (L.) Ling. It is a very rare species collected from only two locations in the Tiger Reserve, in Srisaillam and

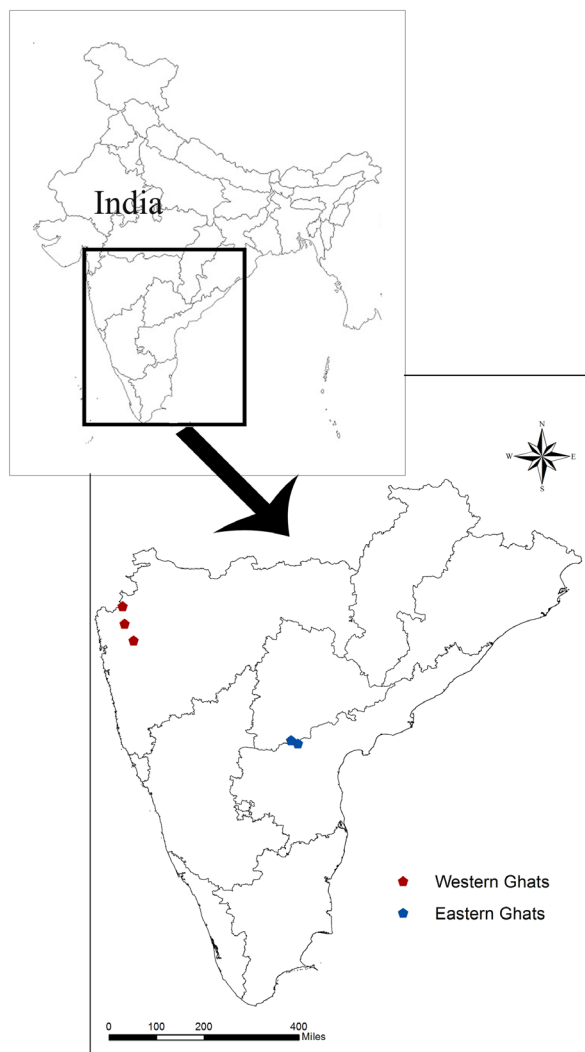


Image 2. Distribution of *Ipomoea clarkei* Hook. f. in peninsular India

Saleswaram, and found a few individuals in each location.

Additional specimens examined: s.n. (Kew Barcode No. K001081777!), Malabar-Concan, coll. J.S. Law; s.n., (Kew Barcode No. K000830819!), Malabar-Concan, coll. J.E. Stocks.

References

- Biju, S.D., P. Matthew & V.M. Kumar (1998). *Ipomoea mombassana* Vatke (Convolvulaceae) - a new record for India. *Journal of Economic and Taxonomic Botany* 22(2): 471–473.
- Biju, S.D. (2002). *Ipomoea parasitica* (Kunth.) G. Don (Convolvulaceae): A new record for India. *Rheedea* 12(1): 77–79.
- Clarke, C.B. (1885). Convolvulaceae, pp. 179–228. In: Hooker, J.D. (ed.). *Flora of British India - Vol. 4*. L. Reeve & Co., London.
- Cooke, T. (1908). *The Flora of the Presidency of Bombay - Vol. 2*. Taylor & Francis, London, England, 222–261 pp.
- Mabberley, D.J. (2008). *Mabberley's Plant-Book A Portable Dictionary of Plants Their Classification and Uses - 3rd Edition*. Cambridge University Press, Cambridge, UK, 432 pp.

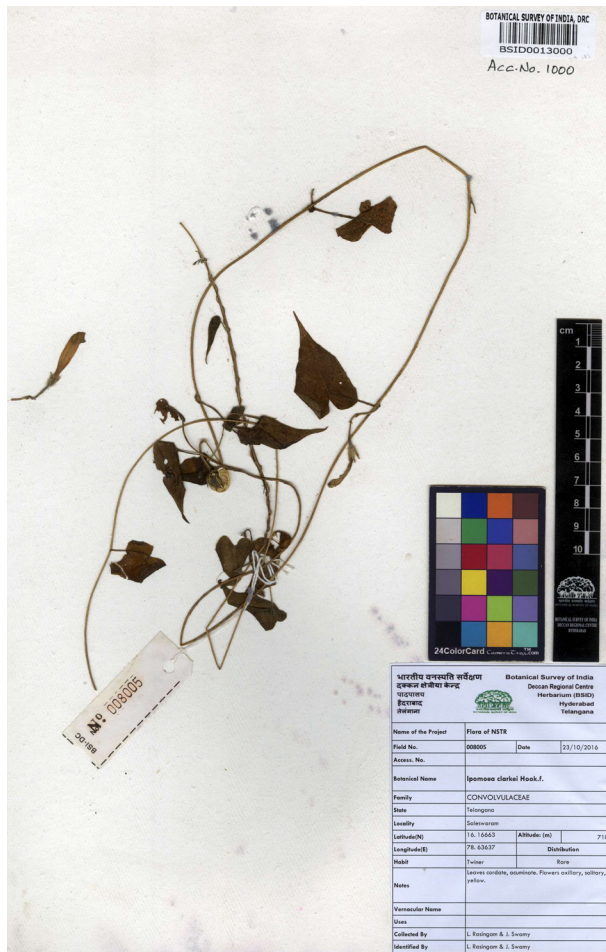


Image 3. Herbarium image of *Ipomoea clarkei* Hook. f. (L. Rasingam & J. Swamy 8005 (BSID)).

Santapau, H. & A.N. Henry (1973). *A Dictionary of the Flowering Plants in India*. Council of Scientific & Industrial Research, New Delhi, 83pp.

Sarvalingam, A., A. Rajendran, R. Sivalingam & P. Jayanthi (2014). *Ipomoea muelleri* Benth. (Convolvulaceae) - a new record for Asian Continent. *Jordan Journal of Biological Sciences* 7(4): 299–300.

Shimpale, V.B., P.R. Kshirsagar & N.V. Pawar (2012). *Ipomoea ochracea* (Convolvulaceae)- A new record for India. *Rheedea* 22(2): 99–102.

Shimpale, V.B., M.A. Kare, D.K. Londhe & A.S. Bhuktar (2014). On the occurrence of *Ipomoea tenuipes* (Convolvulaceae) in India. *Rheedea* 24(2): 117–119.

Singh, P., K. Karthigeyan, P. Lakshminarasimhan & S.S. Dash (2015). *Endemic Vascular Plants of India*. Botanical Survey of India, Kolkata, 144p.





OPEN ACCESS



The Journal of Threatened Taxa is dedicated to building evidence for conservation globally by publishing peer-reviewed articles online every month at a reasonably rapid rate at www.threatenedtaxa.org. All articles published in JoTT are registered under [Creative Commons Attribution 4.0 International License](https://creativecommons.org/licenses/by/4.0/) unless otherwise mentioned. JoTT allows unrestricted use of articles in any medium, reproduction, and distribution by providing adequate credit to the authors and the source of publication.

ISSN 0974-7907 (Online); ISSN 0974-7893 (Print)

May 2018 | Vol. 10 | No. 6 | Pages: 11703–11830

Date of Publication: 26 May 2018 (Online & Print)

DOI: 10.11609/jott.2018.10.6.11703-11830

www.threatenedtaxa.org

Communications

Home range and spatial organization by the Hoary Fox *Lycalopex vetulus* (Mammalia: Carnivora: Canidae): response to social disruption of two neighboring pairs

-- Julio C. Dalponte, Herson S. Lima, Stuart Klorfine & Nelton C. da Luz, Pp. 11703–11709

People's attitude towards wild elephants, forest conservation and Human-Elephant conflict in Nilambur, southern Western Ghats of Kerala, India

-- C.K. Rohini, T. Aravindan, K.S. Anoop Das & P.A. Vinayan, Pp. 11710–11716

Analysis of regurgitated pellets of Spotted Owlet *Athene brama* (Temminck, 1821) (Aves: Strigiformes: Strigidae) from Punjab, India

-- Renuka Malhotra & Neena Singla, Pp. 11717–11724

Species diversity and abundance of birds on Bharathiar University Campus, Tamil Nadu, India

-- L. Arul Pragasam & M. Madesh, Pp. 11725–11731

On the taxonomy of the first record of rare deep-water rough shark species of Oxynotidae (Chondrichthyes: Squaliformes) in the western Indian Ocean

-- Sarah Viana & Mark W. Lisher, Pp. 11732–11742

Forest evergreenness and tree endemism in the central Western Ghats, southern India

-- Divakar K. Mesta & Ganesh R. Hegde, Pp. 11743–11752

Distribution of *Rhododendron falconeri* Hook. F. (Ericales: Ericaceae) in Yuksam-Dzongri trekking corridor of Khangchendzonga National Park, Sikkim, India

-- Aseesh Pandey & Hemant K. Badola, Pp. 11753–11759

Peer Commentary

The characteristics, representativeness, function and conservation importance of tropical dry evergreen forest on India's Coromandel Coast

-- Mark Everard, Pp. 11760–11769

Short Communications

Mugger Crocodile *Crocodylus palustris* Lesson, 1831 (Reptilia: Crocodylia: Crocodylidae) in river Saberi of Godavari system in southern Odisha, India: conservation implications

-- Subrat Debata, Swetashree Purohit, Anirban Mahata, Sudheer Kumar Jena & Sharat Kumar Palita, Pp. 11770–11774

A new record of the lesser-known butterfly Small Woodbrown *Lethe nicetella* de Nicéville, 1887 (Lepidoptera: Nymphalidae: Satyrinae) from Khangchendzonga National Park, Sikkim, India

-- Sailendra Dewan, Bhoj Kumar Acharya & Sudeep Ghatani, Pp. 11775–11779

Partners



Member



Publisher & Host

